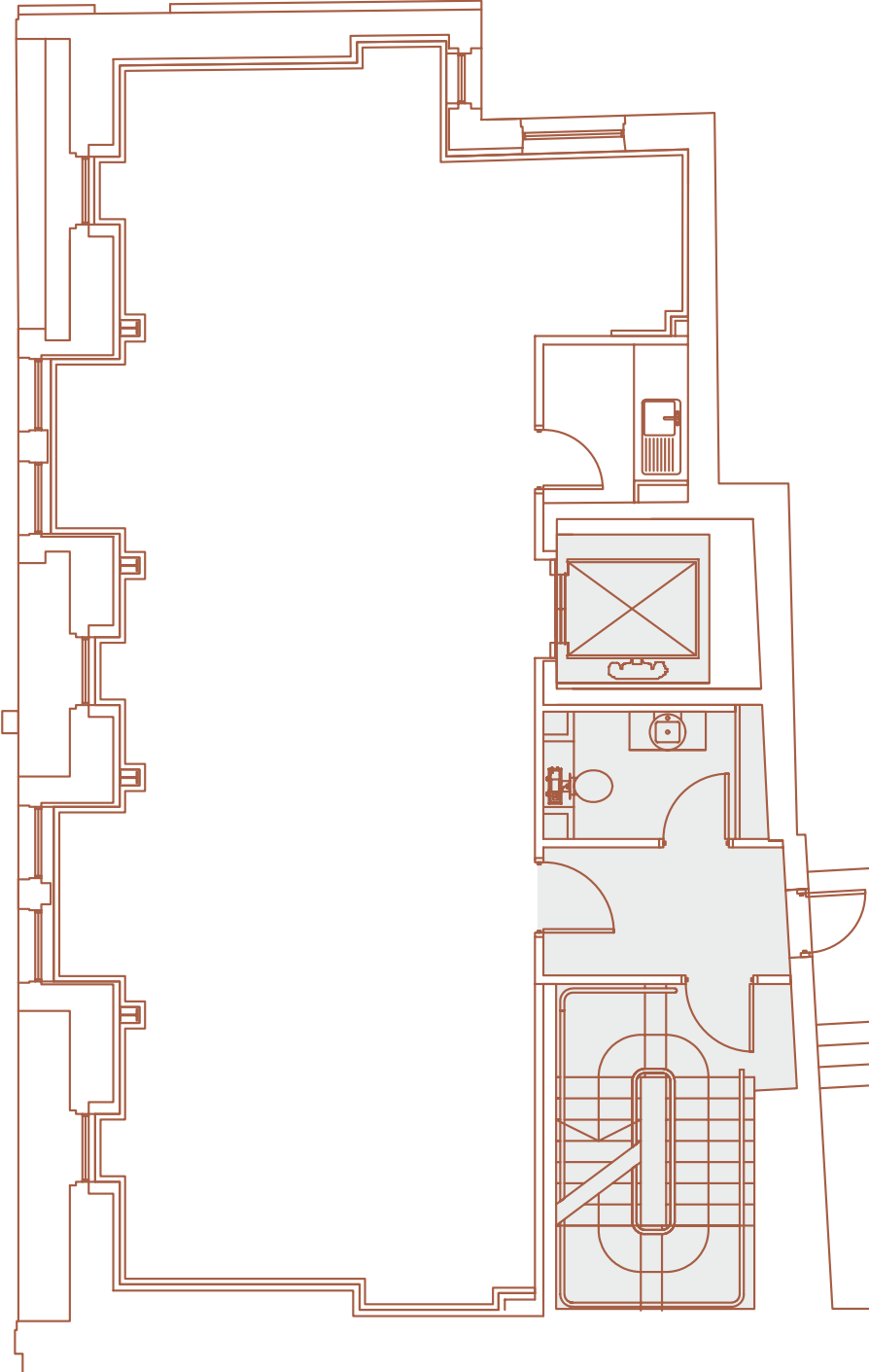


**OLD PARK LANE**  
MAYFAIR W1

**370 - 2,914 SQ FT**  
HIGH QUALITY, NEWLY REFURBISHED  
AIR CONDITIONED OFFICES TO LET

**3RD FLOOR PLAN**  
835 SQ FT / 77.57 SQ M



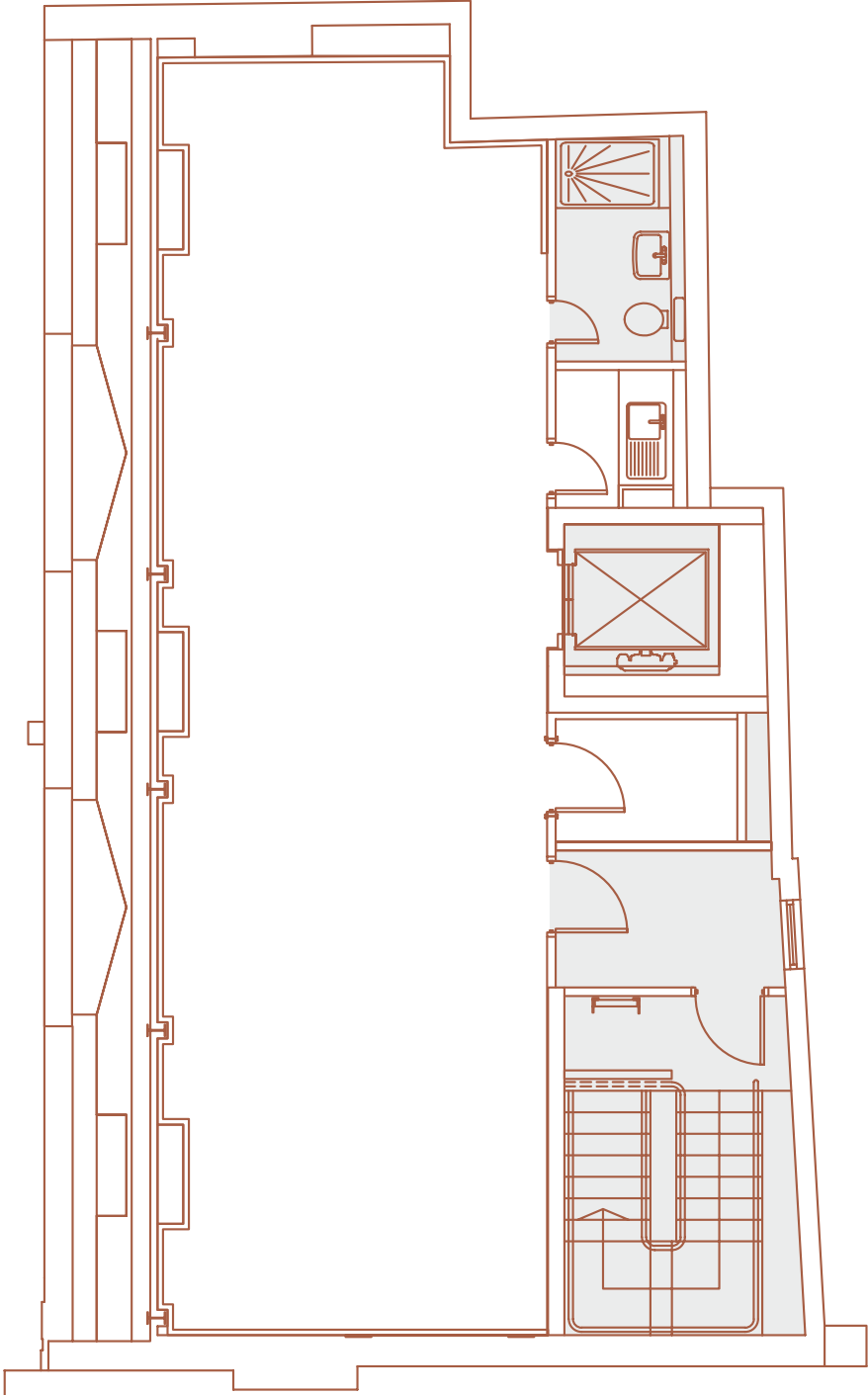
For indicative purposes only - not to scale.



**OLD PARK LANE**  
MAYFAIR W1

370 - 2,914 SQ FT  
HIGH QUALITY, NEWLY REFURBISHED  
AIR CONDITIONED OFFICES TO LET

**4TH FLOOR PLAN**  
764 SQ FT / 70.42 SQ M



For indicative purposes only - not to scale.